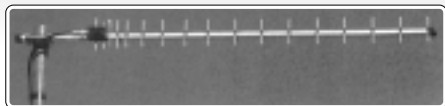


BEAM & DIPOLE

V/UHF YAGI Station Antenna



CYA-1216E



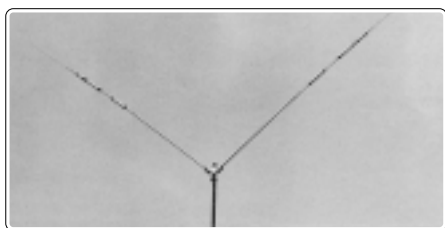
CA-52HB2



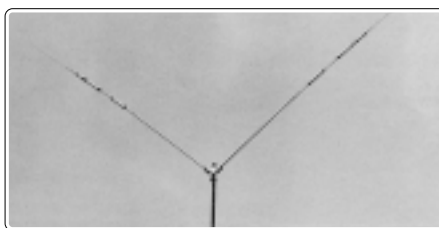
CA-52HB4

Model	Frequency	Gain	Max.power rating	Dimensions	Weight	Wind surface area	Mast diameter accepted	Connector	Type
V/UHF YAGI Station Antenna									
CYA-1216E	1200MHz	16.6dbi	100W FM/200W SSB	0.75x1.36x0.8m	0.64kg	0.04m ²	25-65	NJ	16-elements single antenna.Turning radius 1.3m
CA-52HB2	50-53MHz (Center frequency without adjustment is set to 51MHz)	6.3dbi	400W SSB	0.75x2.97x0.8m	0.91kg	0.054m ²	25-65	MJ	2-elements beam antenna.Turning radius 1.54m
CA-52HB4	50-53MHz (Center frequency without adjustment is set to 51MHz)	10.4dbi	400wW SSB	3.2x2.97x0.8m	2.1kg	0.19m ²	25-65	MJ	4-elements beam antenna.Turning radius 2.22m

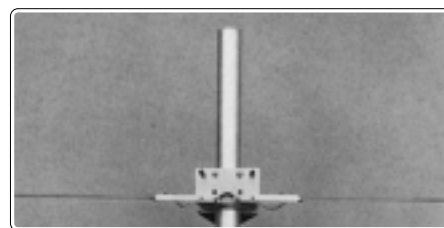
HF Traped Diploe Antenna



H722



H422



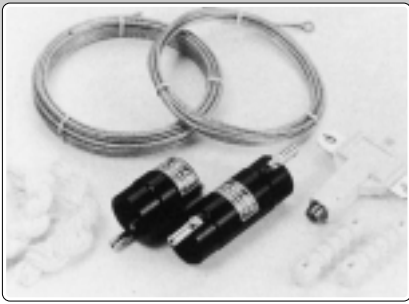
H-D6



VA30

Model	Frequency	Gain	Max.power rating	Dimensions	Weight	Wind surface area	Mast diameter accepted	Connector	Type
HF Traped Diploe Antenna									
H722	7/21/28MHz (adjustment is only 7MHz)	—	1KW SSB	Horizontal-Dipole: 9.8m V-Dipole: 6.9m	4.8kg	0.26m ²	38-62	MJ	7/21/28MHz Dipole antenna
H422	7/14/21/28MHz (adjustment is only 7MHz)	—	1KW SSB	Horizontal-Dipole: 10.3m V-Dipole: 7.4m	5.4kg	0.28m ²	38-62	MJ	7/21/28MHz Dipole antenna
H-D6	50-53MHz	—	200W SSB	Horizontal-Dipole: 2.83m V-Dipole: 2.51m	250g	—	25-62	—	for H722 and H422 use
VA30	7/21/28MHz	—	120W (7/21) SSB 200W (28MHz) SSB	approx 3.0m	1.8kg	—	—	MJ	7/21/28MHz Dipole antenna

HF Wired Dipole Antenna



Model	Frequency	Max.power rating	Length	Conne-cter	Type
HF Wired Dipole Antenna					
CWA3.5	3.5MHz	1KW (PEP)	44m	MJ	
CWA3.5H	3.5MHz	2KW (PEP)	44m	MJ	Balun: CBL2000
CWA7	7MHz	1KW (PEP)	22m	MJ	
CWA7H	7MHz	2KW (PEP)	22m	MJ	Balun: CBL2000
CWA840	3.5/7MHz	500W (PEP)	27.2m	MJ	
CWA415	7/21MHz	500W (PEP)	13.8m	MJ	
CWA718	7/21/28MHz	500W (PEP)	13.8m	MJ	
CWA1000	3.5/7/14/21/28MHz	500W (PEP)	19.9m	MJ	

Assembly chart

